

**FRONT ELEVATION**

SCALE: 1/4" = 1'-0" (BLDG.'S 1-20)

**WINDOW SCHEDULE**

NO.	NOM. SIZE	TYPE	SQ.FT.	VENT SQ.FT.	NOTES
A	3'-0"x5'-0"	S.H.	15.0	7.5	DOUBLE PANE, LOW E, WELDED VINYL ENERGY STAR LISTED (MIN.-U-VALUE, 0.30/SHGC, 0.25)
B	3'-0"x4'-0"	S.H.	12.0	6.0	DOUBLE PANE, LOW E, WELDED VINYL ENERGY STAR LISTED (MIN.-U-VALUE, 0.30/SHGC, 0.25)
C	3'-0"x3'-0"	S.H.	9.0	4.5	DOUBLE PANE, LOW E, WELDED VINYL ENERGY STAR LISTED (MIN.-U-VALUE, 0.30/SHGC, 0.25)
D	2'-8"x2'-8"	FIXED	7.11	0.0	DOUBLE PANE, LOW E, WELDED VINYL ENERGY STAR LISTED (MIN.-U-VALUE, 0.30/SHGC, 0.25)

INSTALL CULTURED MARBLE SILLS @ ALL WINDOW LOCATIONS.  
INSTALL NEW 1" PVC MINI-BLINDS @ ALL WINDOWS, SEE SPEC.'S. INSTALL WINDOW TAPE & FLASHING @ ALL WINDOW EXTERIORS & ALL EXTERIOR DOORS.

**BRICK AREA CALC.**

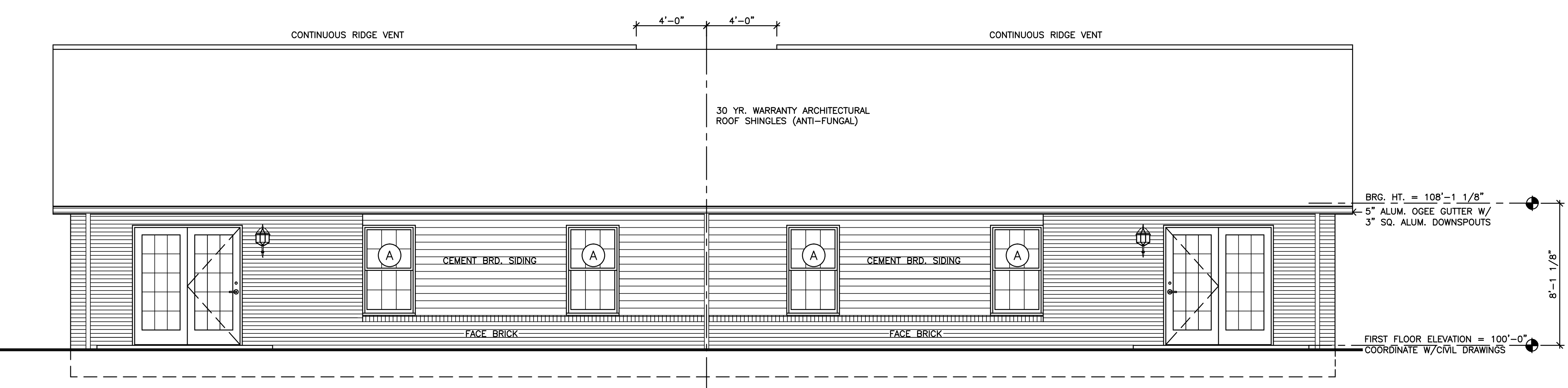
- EXTERIOR WALL SURFACE AREA PER SIDE:
 

FRONT	611 SF
SIDE 1	516 SF
SIDE 2	516 SF
REAR	525 SF
TOTAL	2,167 SF X .7=1,517 SF REQ'D.
- BRICK COVERAGE PER SIDE:
 

FRONT	419 SF
SIDE 1	457 SF
SIDE 2	457 SF
REAR	213 SF
TOTAL	1,546 SF > 1,517 SF

NOTE: ALL EXTERIOR MATERIALS/COLORS TO BE SUBMITTED TO ARCHITECT FOR APPROVAL PRIOR TO INSTALLATION.

NOTE: INSTALL SPLASH BLOCKS @ ALL DOWNSPOUT LOCATIONS.



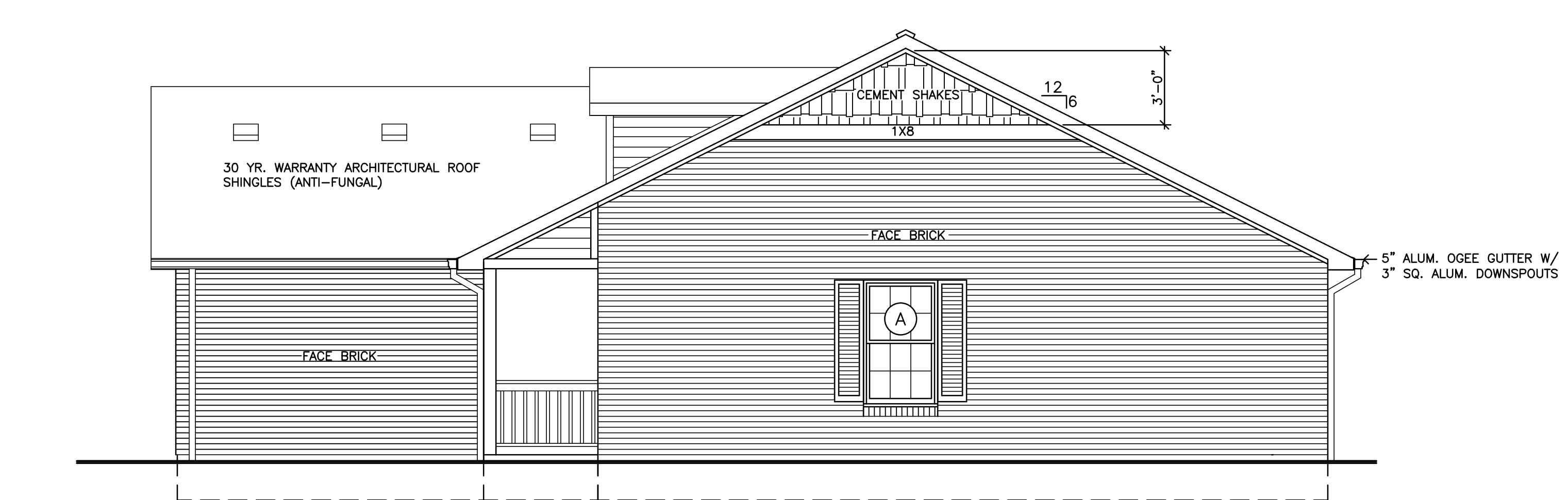
**REAR ELEVATION**

SCALE: 1/4" = 1'-0" (BLDG.'S 1-20)



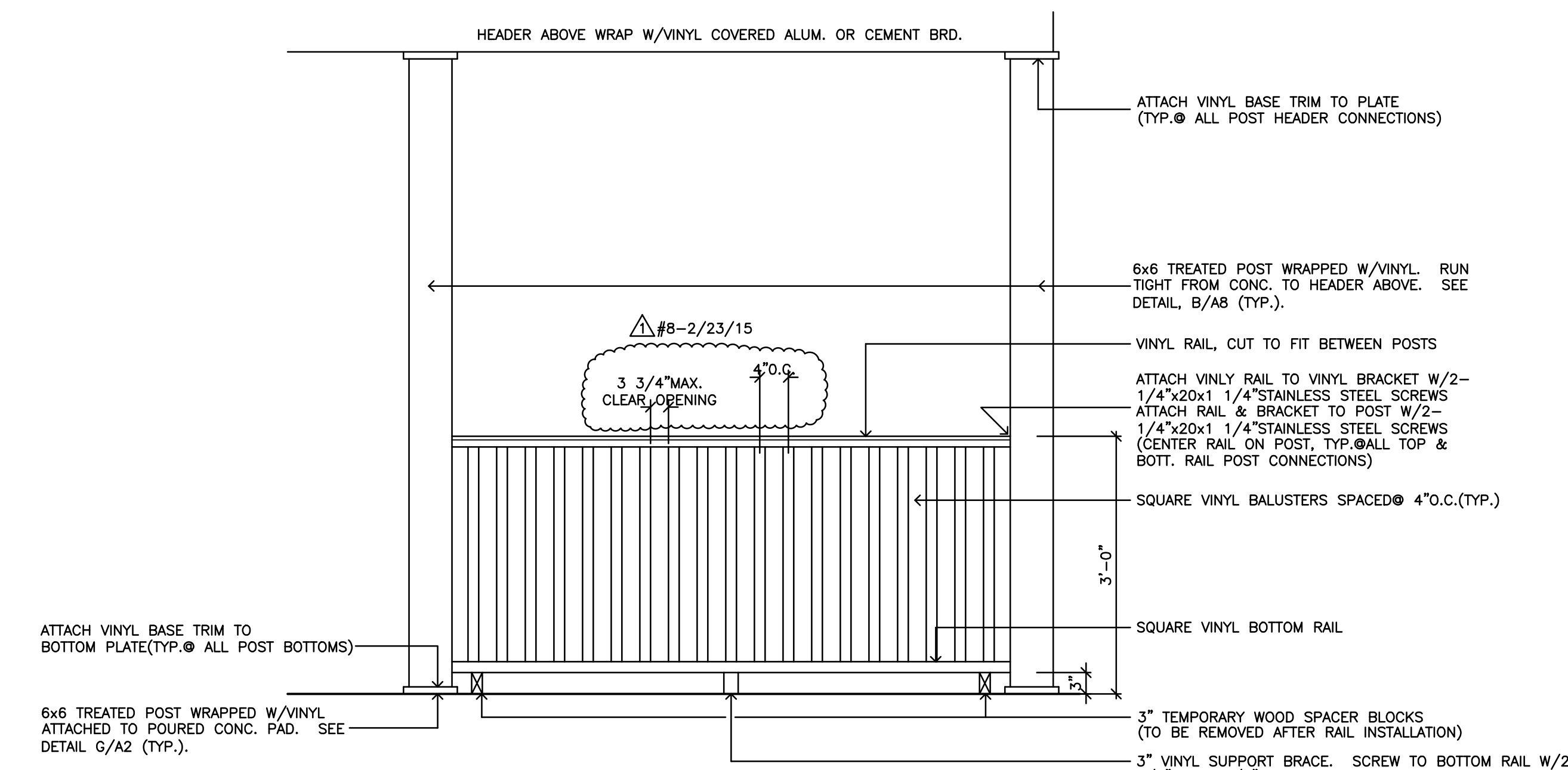
**ENTRANCE DETAIL**

SCALE: 1/4" = 1'-0" TWO BEDROOM UNIT



**SIDE ELEVATION**

SCALE: 1/4" = 1'-0" (BLDG.'S 1-20) (OPPOSITE SIDE SIMILAR)



**PORCH RAIL DETAIL**

SCALE: 3/4" = 1'-0"